The background features a light blue gradient with several horizontal wavy bands in a slightly darker shade of blue. On the left side, there are numerous bubbles of varying sizes, some of which are semi-transparent and overlap the wavy bands. The main title is centered in a large, black, sans-serif font.

Kakahu Catchment Group

Sub-Catchment Plan –

Recommendations to Zone Committee

About our catchment

Part of the Temuka nutrient allocation zone (red)

State of the Environment testing showed the Lower Kakahu

- High DRP
- High E.Coli
- N levels are currently within LWRP standards

David Kelly advised S.O.E testing had ceased and advised further testing ourselves

Kakahu Streams & Groundwater identified as a “Data Gap” in the United Research Services Report October 2014

About our catchment

River is augmented during the irrigation season by Opuha Water Limited via the Kakahu Irrigation Limited

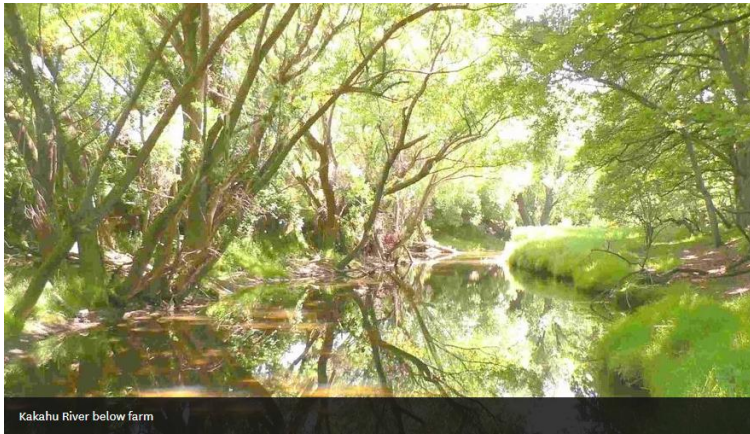


As we are an augmented catchment, how the river is managed is now different to the rest of the Temuka catchment

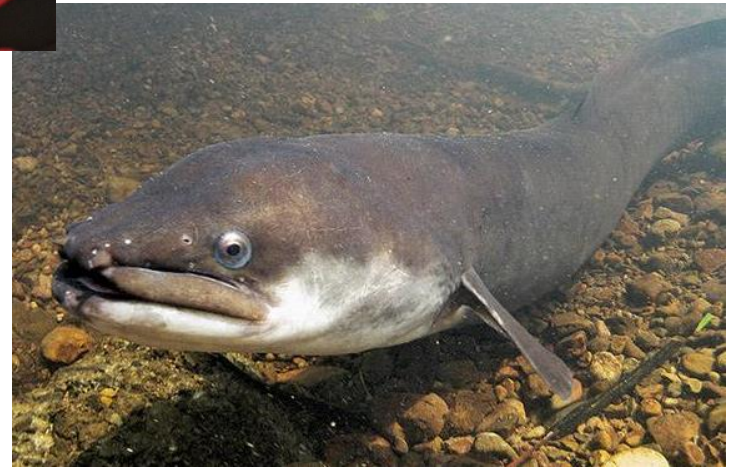
About our catchment

Habitat for bats, long finned eel and freshwater mussels & crayfish

Maori rock art at the escarpment



Kakahu River below farm



2nd largest Native Bush remnant in O.T.O.P zone (South Canterbury Conservation Trust)

About our catchment

Very mixed land use with forestry, arable, sheep and beef, dairy support and dairy



Water used for irrigation, domestic and stock water

Kakahu Catchment Group

Vision Statement:

“The Kakahu Catchment will provide for safe drinking water, recreation, enhance cultural and wildlife values, and support sustainable, economic activities for the immediate and long term future”

KAKAHU CATCHMENT GROUP

March 2017

Welcome to the Kakahu Catchment Group. Below we have outlined our vision for the catchment, some of the actions we want to focus on to improve water quality and biodiversity in our area and the good management practices we will work together to promote. We are also keen to work with farmers, landowners and community members to improve special areas in our community. We welcome your involvement so feel free to contact us.

WHAT DO WE KNOW?

- Visual pollution is generally considered bad by most people i.e. Algae, Didymo etc.
- 4-5 families within the catchment get their drinking water from the Kakahu
- Bank slumping creates sediment discolouration which needs to be addressed.

At this stage, we still have the opportunity to improve water quality through action on the ground and fencing of water ways where possible.

Kakahu Catchment Group Vision

‘The Kakahu Catchment will provide for safe drinking water, recreation, enhanced cultural and wildlife values, and support sustainable, economic activities for the immediate and long term future.’



The Kakahu River has recently been surveyed to identify areas of Kakahi-freshwater mussels.

Carex Bog at Kelly Bennett's. Photo: Rhys Taylor

Findings from our River visit to the top of the Kakahu Catchment in August 2016

- Looked at logging site in the Geraldine Forest, owned by Blakely Pacific (head of the Kakahu River) and how they manage logging to minimise erosion with little disturbance to the stream
 - Logging has been changed in the Kakahu to predominantly Douglas Fir near the river that will be a 50-year harvest rotation.
 - Looked at the confluence of Stony Creek & Kakahu River – We found major bank erosion which is similar to other sites on the Kakahu.
- Following discussions with Kennedy Lang from ECan about his work on the Wainono Lagoon Restoration Project, the group are keen to investigate possible mitigation strategy's.
- These will potentially include a mix of "Farm Scale" actions such as Farm Environment Plans and fencing off water ways combined with "Catchment Scale" actions such as bank battering and sediment traps.

The group is keen to engage ECan and the landowners in the catchment to conduct a survey in order to prioritise the order and scale of work required. We are keen to work with all stakeholders in the catchment and attempt to improve the current state.

- Looked at the KIL discharge site into the Kakahu River. Looks good, although it wasn't flowing when we visited. We had a discussion on requirements for excluding stock from waterways and what these are & some cost-effective ways to do this. E.g. Electric tape around edge of river, drive a few posts in key spots, replace tape as needed/washed out by flood etc
- Looked at Kelly Bennett's raised peat bog with Carex secta (Pedicelled sedge) plants. This has received some funding from ECan's First Steps programme to protect and enhance the bog with planting and weed control.

Visit to Blakely Pacific Forestry. Photo: Jemma Mulvihill



Kakahu Catchment Group

We have been an active sub-catchment group over the past 3 years

2 years ago, the group decided with the lack of robust information to carry out its own water quality monitoring program (12mth monitoring program completed)

We have had several field days and public meetings within the catchment

Steering Group have done a river walk looking at nutrient hotspots

Kakahu Catchment Group

Currently investigating a Catchment Wide Sediment Trap
Consent with ECan

“APPLICATION FOR A LAND USE CONSENT FOR EARTHWORKS
OVER AQUIFERS, EARTHWORKS AND VEGETATION CLEARANCE
IN RIPARIAN AREAS, INSTALL, REMOVE AND MAINTAIN
STRUCTURE IN THE BED OF A RIVER.”

Key Concerns

Ecan stopped doing ANY water quality monitoring in the catchment at the beginning of this process

Key to understand what is actually happening in the catchment with OWL water coming in, and how water quality changes throughout the catchment

As fencing off the river is expected/required under GMP we have concerns about the provision for stock water.

The Downlands & Te Moana schemes are currently fully allocated so future water allocation will be required.

Key Concerns

We want to be in the best position to make informed decisions about our catchment, however will find this impossible due to the current lack of monitoring

We are concerned that the Kakahu Catchment will be grouped with the Temuka Catchment for the sub regional process, whose issues are different to ours

(high P versus high N)

Key Concerns

Also concerned that there are fundamental issues with the Farm Portal and how that is generating Good Management Practice (GMP) loss numbers

GMP needs to be less about a number and more about what is actually happening on farm

Lack of robust science feeding this process – concerns about the catchment modeling, how GMP is being used in this context, and the impacts that will have

General Outcomes Sought

To recognize augmentation of the Kakahu catchment, and that we do not have the same water quality issues as other catchments around us.

We are seeking further Ecan funding and expertise to investigate this.

P is more easily mitigated through on FEP's and other on farm and catchment wide measures, such as sediment traps

Fully support the use of FEP's and GMP (the booklet and physical practices)

General Outcomes Sought

Split the Kakahu into the upper and lower catchments as they have different issues.

Ecan to fund more frequent “in River” monitoring of the river to assist with measuring land use effects.

Allowing landholders to see the difference they are making

Funded monitor farm Project

Proposed Solutions

We want to be actively part of determining the catchments solutions

Expert technical meetings with ECan and stakeholders to agree on the modeling being undertaken

ECan to provide all required expert reports, to base solutions on robust facts

Proposed Solutions

We will review this information, and then work through with ECan and stakeholders suitable solutions, prior to the plan being drafted

This will provide the best opportunity to determine solutions for the catchment as a whole

Unless changes are made now to this process, all parties will be fighting it out at a hearing, which goes against collaborative processes and ensuring the best outcome.

Questions?

We welcome questions 😊